



# INSTALLATION, OPERATION & MAINTENANCE MANUAL



**MODEL:**

**FJ2T**

**2 TON (4,000 LB) CAPACITY HYDRAULIC FLOOR JACK**

**!** FOLLOW THIS MANUAL CAREFULLY TO ENSURE THE EQUIPMENT WILL FUNCTION CORRECTLY AND PROVIDE MANY YEARS OF DEPENDABLE SERVICE. FAILURE TO FOLLOW THESE INSTRUCTIONS AND SAFETY WARNINGS MAY RESULT IN PERSONAL INJURY OR PROPERTY DAMAGE. KEEP THIS MANUAL IN A SAFE DRY PLACE FOR FUTURE REFERENCE.



**Products May Be  
Upgraded Without Notice  
Please Visit**

**WWW.TITANLIFTS.COM**

**For The Latest Version Of  
This Manual**



**TITAN MARKETING, LLC**

PO Box 7069 Greenwood, IN 46142  
1.888.908-4826 FAX (317) 215.2770  
[www.titanlifts.com](http://www.titanlifts.com)

To Our Valued Customers:

Thank you for purchasing a Titan Lifts® product. We hope this high quality equipment provides you with years of dependable service.

It is unfortunate that rare situations may occur with the products you purchase from Titan Lifts®. We value your business as well as the trust you have and need to maintain your relationship with us. Titan Lifts® carries liability coverage that may protect our customers if a situation does occur. However, as in all accidents there must be proof of liability for a claim to be made. Our insurance company requires the following procedures be observed in order to consider a claim:

- A. The claimant must contact the Titan Lifts® distributor immediately with the facts of the situation.
- B. If any equipment is damaged, including vehicles or shop equipment, Titan Lifts® must be given the opportunity to send an impartial representative to the site for proper assessment of the situation.
- C. The Vehicle cannot be moved until either an impartial representative has reviewed the accident or clear and precise pictures are taken that reflect all the pertinent information for an impartial representative to be able to access the information from a distance. Titan Lifts® or its representatives must approve the pictures before anything can be moved.
- D. If any potential liability is determined on behalf of Titan Lifts®, two estimates must be submitted for damages to be reimbursed.

It is imperative that the claimant complies with these procedures, because without proper assessment of the situation a claim will be denied.

#### ARBITRATION NOTICE

The installation or use of this equipment shall constitute an acknowledgement that the user agrees to resolve any and all disputes or claims of any kind whatsoever, which relate in any way to the equipment, by way of binding arbitration, not litigation. No suit or legal action may be filed in any state or federal court. Any arbitration shall be governed by the Federal Arbitration Act, and administered by the American Mediation Association, Indianapolis Indiana. The maximum amount that an arbitrator may award and all damages shall not exceed the retail value of this equipment.

#### WARRANTY NOTICE

This equipment must be assembled and used in the manner according to the documentation provided to be covered by warranty.

Damaged or missing components must be reported within 72 hours of receipt to your freight carrier and to the distributor. Claims must be filed to cover cost.

If you have any questions or if we can be of any further assistance, please don't hesitate to contact a Titan Lifts® representative at 1-888-908-4826. Thank you for the opportunity to continue to serve your lift equipment needs.

# DESCRIPTION

This hydraulic floor jack is designed to lift, but not support, one end of a vehicle. Immediately after lifting, load must be supported by at least two appropriately rated jack stands.

# SPECIFICATIONS

Rated capacity	2 Ton (4,000 LB)
Min. Height	2-3/4"
Max. Height	23-1/2"
Length	32-5/8"
Net Weight	100 LB

# SAFETY PRECAUTIONS

1. Locate the jack in a suitable working area.
2. Inspect the jack before each use. Do not use jack if damaged, altered, modified, in poor condition, leaking hydraulic fluid, or unstable due to loose or missing hardware or parts. Make corrections before using
3. Use jack on level and solid ground, preferably concrete. Avoid asphalt as jack may sink in. Chock wheels of vehicle.
4. Ensure the vehicle parking brake is engaged, engine is switched off and transmission in gear (or "PARK" if automatic).
5. Ensure minimum distance of 18" between vehicle and static objects such as doors, walls, etc, to allow for vehicle tilting.
6. Ensure all non-essential persons keep a safe distance while the jack is in use.
7. Ensure there are no passengers in the vehicle.
8. Place jack under only those lifting points recommended by vehicle manufacturer (see vehicle handbook)
9. Check that the lifting point is stable and centered on the jack saddle.
10. Ensure the jack wheels are free to move and that there are no obstructions.
11. Danger : Use the jack for lifting only
12. Ensure there are no persons or obstructions beneath the vehicle before lowering.
13. Use suitable jack stands under the vehicle before proceeding with any task.
14. Use a qualified person to lubricate and maintain the jack.
15. Wear ANSI-approved safety goggles and heavy-duty working gloves during use.

16. Ensure that only hydraulic jack oil is used in the jack.
17. DO NOT operate the jack if damaged.
18. DO NOT allow untrained persons to operate the jack.
19. DO NOT exceed the rated capacity of the jack.
20. DO NOT allow the vehicle to move during lifting or lowering, or use the jack to move the vehicle.
21. DO NOT jack vehicle if there is a risk of spillage of fuel, battery acid, or other dangerous substances.
22. DO NOT work under the vehicle until appropriately rated jack stands have been correctly placed under the vehicle.
23. DO NOT fill hydraulic system with brake fluid, alcohol or transmission fluid. Use hydraulic jack oil only.
24. DO NOT adjust the safety overload valve
25. DO NOT use for aircraft purposes
26. When not in use store jack, fully lowered, in a safe, dry, childproof location.
27. The warnings, precautions, and instructions discussed in this manual cannot cover all possible conditions and situations that may occur. The operator must understand that common sense and caution are factors, which cannot be built into this product, but must be supplied by the operator.

## ASSEMBLY

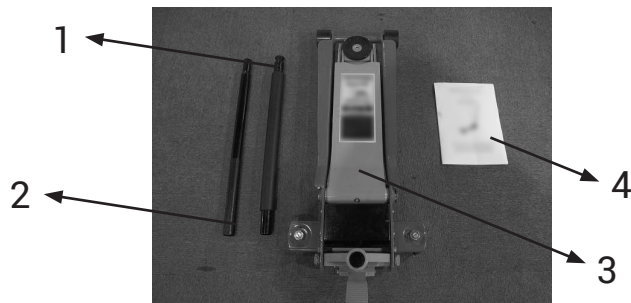
**⚠ WARNING:** READ ENTIRE MANUAL AND COMPLY WITH ALL SAFETY AND SERVICE PRECAUTIONS. DEATH, PERSONAL INJURY AND / OR PROPERTY DAMAGE MAY OCCUR IF INSTRUCTIONS ARE NOT FOLLOWED CAREFULLY.

**⚠ WARNING:** BEFORE OPERATING THE FLOOR JACK, MAKE SURE THAT ALL THE HARDWARE IS SECURE AND THE UNIT HAS BEEN TESTED PROPERLY.

### RECEIVING INSTRUCTIONS

Visually inspect all components for shipping damage. If any shipping damage is found, notify carrier at once. Shipping damage is NOT covered by warranty.

No.	Description	Qty
1	Handle Tube 1	1
2	Handle Tube 2	1
3	Jack Body	1
4	Instruction Manual	1



## ASSEMBLY

- 1) The jack is comprised the following parts, Jack body, Two-part pumping handle.
- 2) Unscrew the bolt from handle tube 1, Insert the upper handle into the lower handle. Secure the two pieces together with the bolt.



(1) Handle Tube 1



(2) Unscrew the bolt from the handle

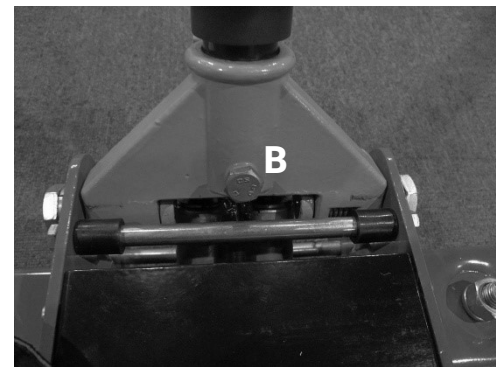
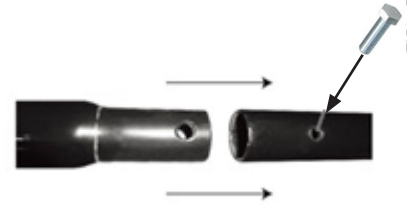


(3) Insert the upper tube



(4) Tighten the bolt

- 3) The handle socket is pressed down and supported by nylon supporting block in the package during transportation. Before assembling, please take out the nylon supporting block.
- 4) Undo the screw(B) in the handle socket, until it no longer protrudes into the handle socket.
- 5) Insert the pump handle into the handle socket hole completely.
- 6) Ensure that the handle is correctly inserted into the socket, then tighten the handle socket screw (B). Please make sure that the handle can be turned smoothly.



# HYDRAULIC SYSTEM PURGING

1. Open the release valve by turning it two full turns counter-clockwise.
2. Pump the handle four full strokes quickly.
3. Close the release valve by turning it clockwise.
4. Pump the handle with full strokes to check if it can reach the maximum height within ten pumps.

**If it can't reach the maximum height within ten pumps, please refer to the following special purging process:**

5. Open the release valve by turning counter-clockwise and lower the lifting arm to the minimum height.
6. Put the jack on a flat working table, lift the front part of the jack to make sure the front part is at least 18" higher than the back part of the jack. See the following photo.
7. Pump the handle four full strokes quickly.
8. Put the jack on a flat surface and close the release valve by turning it clockwise.
9. Pumping the handle with full strokes to check if it can reach the maximum height within ten pumps. If not please repeat the special purging process again.



## OPERATING INSTRUCTIONS

**⚠ WARNING:** ENSURE THAT YOU READ, UNDERSTAND AND APPLY THE SAFETY INSTRUCTIONS AND WARNINGS BEFORE USE. FAILURE TO HEED THESE INSTRUCTIONS MAY RESULT IN PROPERTY DAMAGE AND/OR PERSONAL INJURY.

### **RAISING A VEHICLE**

1. Ensure that the jack and the vehicle are on a hard, level surface.
2. Always ensure that the vehicle parking brake is engaged and that the vehicle wheels are chocked.
3. Consult the vehicle manual to determine the location of jacking points. Position the jack under a suitable lifting point.
4. Turn the handle clockwise, to close release valve. DO NOT over-tighten.
5. Raise the vehicle to the desired height by pumping the handle up and down.
6. Place jack stands beneath the locations recommended by the vehicle manufacturer.
7. Turn the release valve slowly counter-clockwise to lower the vehicle on to the jack stands.

## LOWERING A VEHICLE

1. Turn the release valve clockwise to close it.
2. Pump the handle to raise the vehicle off the jack stands.
3. Remove the jack stands from beneath the vehicle.
4. Turn the release valve slowly counter-clockwise to lower the vehicle to the ground.

**NOTE:** When the jack is not in use, **ALWAYS** leave the saddle and ram fully retracted.

**CAUTION:** Keep hands and feet away from the hinge mechanism of the jack

**IMPORTANT:** Only fully qualified personnel should attempt maintenance or repair.

# MAINTENANCE

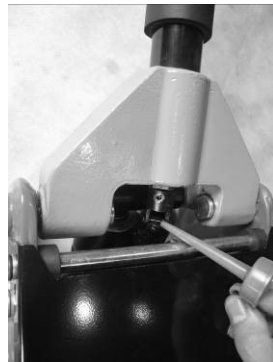
## MONTHLY MAINTENANCE

Lubrication is critical to jacks, since they support heavy loads. Any restriction due to dirt or rust can cause slow jack movement or extremely rapid jerks, causing damage to the internal components. To keep the jack well lubricated, carry out the following steps.

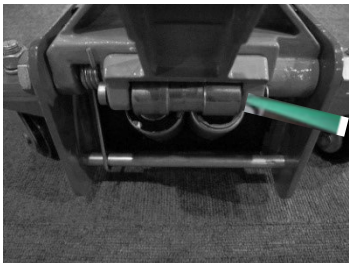
1. Lubricate the linkages, the saddle, and pump mechanism with light oil.



Linkage (1)



Linkage (2)



Roller Pin (right)



Roller Pin (left)



Lifting Arm

2. Grease the wheel bearing and axles.
3. Keep all jack surfaces and warning labels clean.
4. Check the pump for any signs of rust or corrosion. Clean the pump as required.

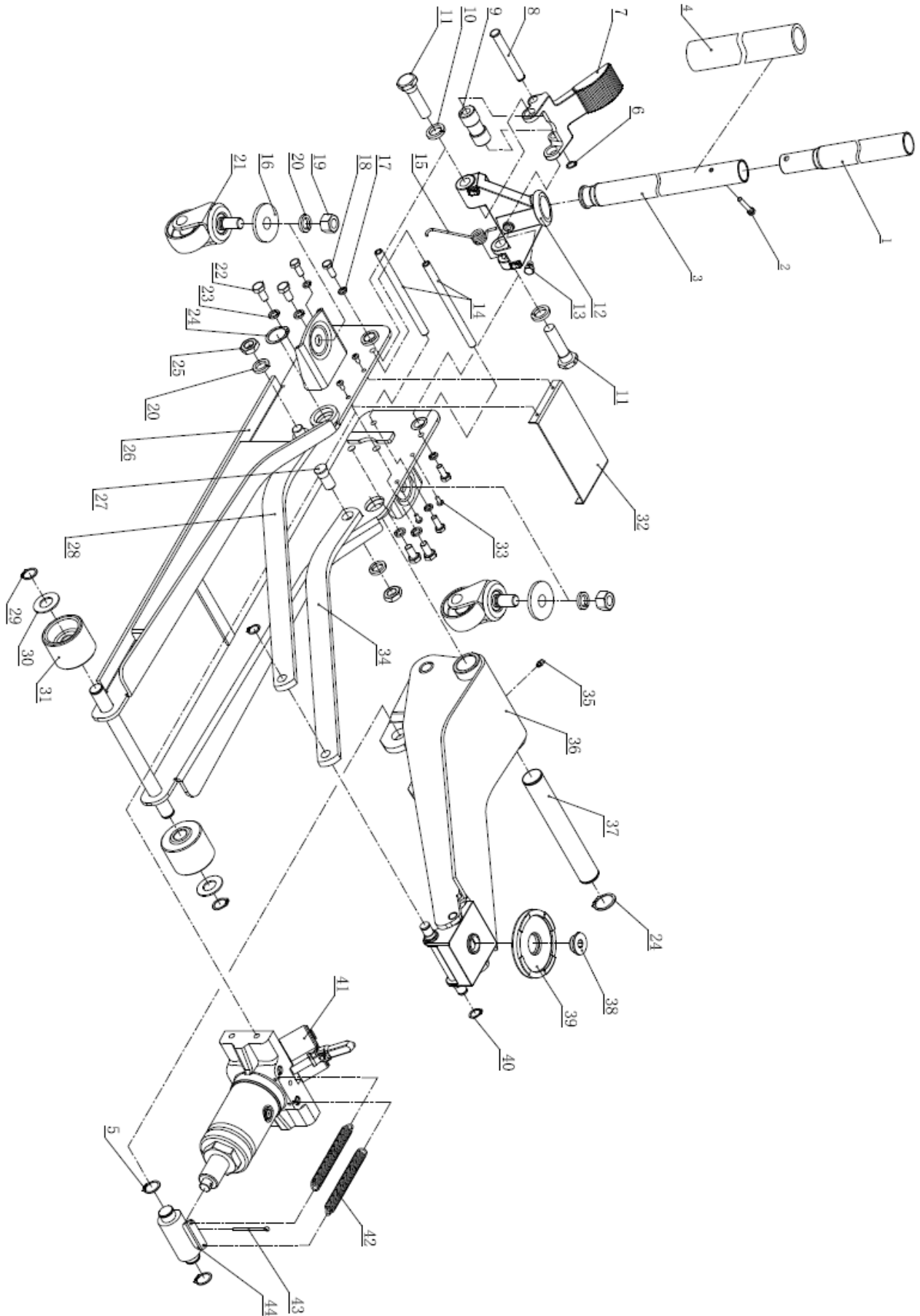


# TROUBLESHOOTING

<b>Problem</b>	<b>Cause</b>	<b>Solution</b>
Jack will not lift to full height	<ol style="list-style-type: none"><li>1. Oil level low</li><li>2. Release valve not closing</li></ol>	<ol style="list-style-type: none"><li>1. Check / add oil</li><li>2. Close the release valve</li></ol>
Jack will not hold the load	<ol style="list-style-type: none"><li>1. Hydraulic oil is contaminated</li><li>2. Pump leaking</li></ol>	<ol style="list-style-type: none"><li>1. Contact authorized service agent</li></ol>
Lift arm will not lower	<ol style="list-style-type: none"><li>1. Pump cylinder binding</li><li>2. Parts worn</li><li>3. Internal component damage</li><li>4. Return spring broken or unhooked</li><li>5. Lift arm linkage bent or binding</li><li>6. Air in the hydraulic system</li></ol>	<ol style="list-style-type: none"><li>1. Contact authorized service agent</li></ol>
After hydraulic purging, the jack cannot reach the maximum height within 10 pumps		<ol style="list-style-type: none"><li>1. Follow all the purge instructions on page 4</li></ol>
Poor lift performance	<ol style="list-style-type: none"><li>1. Fluid level low</li><li>2. Hydraulic unit malfunction</li></ol>	<ol style="list-style-type: none"><li>1. Ensure proper fluid level</li><li>2. Discontinue use, contact authorized service agent</li></ol>

# PARTS DIAGRAMS & LISTS

## DIAGRAM 1



# PARTS LIST 1

<b>NO.</b>	<b>DESCRIPTION</b>	<b>QTY</b>	<b>NO.</b>	<b>DESCRIPTION</b>	<b>QTY</b>
1	UPPER HANDLE SECTION	1	23	LOCK WASHER	4
2	BOLT	1	24	C-CLIP	2
3	LOWER HANDLE SECTION	1	25	NUT	2
4	FOAM HANDLE SLEEVE	1	26	FRAME BASE	1
5	C-CLIP	2	27	ADJUSTMENT SCREW	2
6	C-CLIP	1	28	RIGHT ADJUST PLATE	1
7	FOOT PEDAL	1	29	C-CLIP	2
8	PIN	1	30	FLAT WASHER	2
9	PUMP SPINDLE	1	31	FRONT WHEEL	2
10	LOCK WASHER	2	32	COVER PLATE	1
11	BOLT	2	33	SCREW	4
12	HANDLE SOCKET	1	34	LEFT ADJUST PLATE	1
13	BOLT	1	35	ZERK FITTING	1
14	LIMITING BAR	2	36	LIFT ARM ASSEMBLY	1
15	SPRING	1	37	LIFT ARM SHAFT	1
16	WASHER	2	38	SADDLE BOLT	1
17	LOCK WASHER	4	39	SADDLE	1
18	BOLT	4	40	C-CLIP	2
19	NUT	2	41	PUMP ASSEMBLY	1
20	LOCK WASHER	4	42	SPRING	2
21	REAR CASTER	2	43	ROLL PIN	1
22	BOLT	4	44	ROD ASSEMBLY	1



# WARRANTY REGISTRATION

In order to utilize the warranty on this Titan Lifts product, you must register your product with us. The simplest way to do this is to visit [TITANLIFTS.COM/WARRANTIES](https://www.titanlifts.com/warranties) and submit your information online. If you prefer to send your information through the mail, please fill out the form below and send this page to us at :

**Titan Lifts  
PO Box 7069  
Greenwood, IN 46142**

EQUIPMENT MODEL: \_\_\_\_\_ SERIAL NUMBER: \_\_\_\_\_  
TYPE OF POWER UNIT: \_\_\_\_\_ SERIAL NUMBER: \_\_\_\_\_  
DATE OF PURCHASE: \_\_\_\_\_  
PLACE PURCHASED: \_\_\_\_\_  
NAME: \_\_\_\_\_  
STREET: \_\_\_\_\_  
CITY, STATE, ZIP: \_\_\_\_\_  
PHONE: \_\_\_\_\_  
EMAIL: \_\_\_\_\_

OPT OUT OF PROMOTIONS



In order to receive your warranty, return this card or visit [TITANLIFTS.COM/WARRANTIES](https://www.titanlifts.com/warranties) within 30 days.





## LIMITED WARRANTY

The **Titan 2 Post lifts, 4 Post lifts and Bridge Jacks** are backed by a standard **1-year** replacement parts warranty and a **5-year** structural warranty from the date of purchase, to the original purchaser only. The **1-year** replacement parts warranty covers power units, hydraulic cylinders, and all other assembly components such as, but not limited to: turn plates, slip plates, cables, chains, valves, switches etc. This does not cover normal wear items such as, but not limited to: rubber lifting pads and nylon slide blocks. Titan Elite model lifts have been discontinued but still qualify under the same terms as shown above.

**Titan SL-6600 Scissor Lifts and PREMIER Series 2 Post Lifts** are backed by a **2-year** replacement parts warranty and a **5-year** structural warranty from the date of purchase, to the original purchaser only. The **2-year** replacement parts warranty covers power units, hydraulic cylinders, and all other assembly components such as, but not limited to: valves, switches, capacitors etc. This does not cover normal wear items such as, but not limited to: rubber lifting pads, nylon slide blocks and rubber arm pads.

**Titan MRL-6000 Scissor lifts** are backed by a standard **1-year** replacement parts warranty and a **5-year** structural warranty from the date of purchase, to the original purchaser only. The **1-year** replacement parts warranty covers power units, hydraulic cylinders, and all other assembly components such as, but not limited to: valves, switches, capacitors etc. This does not cover normal wear items such as but not limited to rubber lifting pads.

**Titan ROT-4500 Rotisseries** are backed by a standard **1-year** replacement parts warranty from the date of purchase, to the original purchaser only. The **1-year** replacement parts warranty covers components such as, but not limited to: hydraulic cylinders, caster assemblies, bearings etc. This does not cover normal wear items such as, but not limited to, mounting adapters.

**Titan Standard Duty and Heavy Duty motorcycle lifts** are backed by a standard **1-year** replacement parts warranty from the date of purchase, to the original purchaser only. The **1-year** replacement parts warranty covers power units, hydraulic cylinders, pneumatic cylinders, and all other assembly components such as, but not limited to: cables, caster wheels, valves, switches, wheel vises etc. This does not cover normal wear items such as, but not limited to: rubber wheel vise pads.

**Titan Light Duty motorcycle lifts** are warranted for replacement parts only to the original purchaser for a period of **90 days** from the date of purchase. This **90 day** replacement parts warranty covers items such as, but not limited to: hydraulic cylinder, casters, pedal assemblies, wheel vises etc. This does not cover normal wear items such as, but not limited to: rubber wheel vise pads.

**Titan Bulldog Moto Cradle Wheel Chock** is warranted for replacement parts, only to the original purchaser, for a period of **2-years** from the date of purchase.

**XL Tool by Titan Wheel Service Machines and Helper Arm Assemblies** are backed by a standard **1-year** replacement parts warranty from the date of purchase, to the original purchaser only. The **1-year** replacement parts warranty covers internal boards, motors, pneumatic cylinders, and all other assembly components such as, but not limited to: cabinet, switches, valves, fittings etc. This does not cover normal wear items such as but not limited to: rubber pads, jaw protectors, air hoses, quick nut assemblies.

**Titan shop equipment products and accessories** are warranted for replacement parts only to the original purchaser for a period of **90 days** from the date of purchase. This **90 day** replacement parts warranty covers products such as but not limited to: EZ -Mover Jacks, Mini Jacks, tie down products, wheel service accessories, Bulldog Moto Cradle Wheel Chock accessories, dollies, stands, Multi-purpose Jacks, etc.

**Titan TJ1T, FJ2T, and FJ3T** are warranted for replacement parts only to the original purchaser for a period of **1 year** from the date of purchase.

**All non-serialized items** will require proof of purchase in the form of a sales receipt from an authorized Titan Lifts dealer showing the date of purchase for any warranty consideration.

For **all** warranty considerations, Titan Marketing, LLC will supply replacement parts only during the warranty period. The original purchaser is responsible for all shipping, handling, and any labor charges incurred. Hydraulic/Pneumatic cylinders may qualify for exchange under warranty if reported within the first 30 days from date of sale. After the first 30 days from date of sale, a seal kit and installation instructions will be sent for cylinder repairs. All defective parts must be returned to Titan for inspection and examination. Any parts that are found to be defective will be replaced or repaired to proper working order. Other items not listed above may be considered general wear parts and therefore, will not be covered under warranty. These warranties **do not** extend to **defects** caused by ordinary wear, abuse, misuse, shipping damage, improper installation, voltage or lack of required maintenance. Titan Marketing, LLC is **not** to be held responsible for any **failure** that results from an accident, purchaser/operator abuse, neglect, or failure to operate products in accordance with instructions provided in the owner's manual(s) supplied. Damage caused by rain, excessive humidity, corrosive environments or other contaminants are not covered under warranty. **THESE WARRANTIES DO NOT EXTEND TO ANY COSMETIC DEFECT NOT INTERFERING WITH EQUIPMENT FUNCTIONALITY OR ANY INCIDENTAL, INDIRECT, OR CONSEQUENTIAL LOSS, DAMAGE, OR EXPENSE THAT MAY RESULT FROM ANY DEFECT, FAILURE OR MALFUNCTION OF A TITAN MARKETING LLC PRODUCT OR THE BREACH OR DELAY IN PERFORMANCE OF THE WARRANTY.**

 **WARNING** 

The warnings, precautions and instructions in this manual cannot cover all possible conditions and situations that may occur. The operator must understand that the operator must supply common sense and examine caution factors when using this product to determine safety in all circumstances being used.



**TITAN MARKETING, LLC**

PO Box 7069 Greenwood, IN 46142  
1.888.908-4826 FAX (317) 215.2770  
[www.titanlifts.com](http://www.titanlifts.com)

**Patent No.: US 8,104,588 B2**  
**CA 2,729,670**

**4/30/19**